

# Student Support Services Newsletter

## SERVICE LEARNING- RELAY FOR LIFE

*Crusin' for a Cure*

was this year's theme for the American Cancer Society Relay for Life held on June 27-28 at the Berrien Springs Fairgrounds. More than 100 teams from Southwest Michigan participated raising over **450,656.98!** The **LMC Waverunners** showed how teamwork works. LMC SSS students, Phi Theta Kappa students, Nursing students, Faculty and staff raised over **\$1400**, in spite of the economy. We have a very generous community. Thanks to all who



bought feet and luminaries. **Thank you to Jeromy Kelley, Anthony Wilburn, Robin Vance and**

**daughter, Lydia Williams and sister, Pearl Lewis and daughters, Traci Faulkner and mom, Katelyn Woodford and friends, Rebecca Walker, Amy Vassios and son, Jennifer Jerew and fiancé, Kelly Jones, Nancy Johnson, Penny Strang, Sheran Wallis, LaToya Van Horn and Hursel Cole** for your participation!! Thanks to PTK and LPN Nursing students for the support. The LMC Soccer Club printed our t-shirts at a special price. Thanks, Andy Cowan. Special Thanks to LMC Conference Services for the support of the Relay Auction and the SSS Club for our t-shirts with the Waverunners logo by **Jackie McCloughan.**

## PROGRESS REPORTS

Students enrolled in Summer classes, plan to meet with **Donna or Penny** during **the week of July 27** to review your progress reports. A letter will be mailed to you with your appointment day, time and campus location. If you are unable to keep your appointment as scheduled, please call Penny or Donna to reschedule.



## CHANGE OF ADDRESS/ PHONE NUMBER

If you have a new mailing address, email address and/or phone number, please contact **Pam Weir** to update the information. You can call her at 269-927-8603, stop by and see her in C-207 or email her at: [weir@lakemichigancollege.edu](mailto:weir@lakemichigancollege.edu)

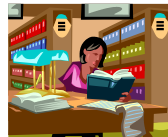
## WORKSTUDY POSITION AVAILABLE



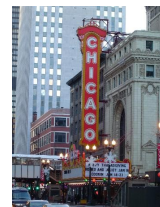
Student Support Services is looking for a work study/peer mentor for the TRIO LAB. Position includes peer mentoring duties: regular telephone, person, or e-mail contact with students, and facilitating study groups. TRIO LAB duties include assisting students with computer applications, computer and library maintenance, record keeping, filing, data entry, greeting students, etc. Position requires strong computer skills, accurate spelling and keyboarding skills, and excellent interpersonal communication ability. We would prefer someone who can work Monday-Friday. Hours can be arranged to fit your class schedule. If interested, see **Stephen Foster** in Career Services.

## STUDY GROUPS

Think you might need a study group this Fall? Contact **Penny or Donna** and let them know which class you might need a study group for. The study groups are designed to be a time when students can get together and study. We ask you to come to the sessions prepared by having read your chapters, writing down your questions and bringing your notes and class materials. Donna or Penny are there to help facilitate the study groups with students taking active roles in moderating the groups.



## YEAR END TRIP



The SSS Year End Trip to Chicago is Saturday, July 25, approximately 8:00am to 8:00pm. We will meet at the various campuses for those who need rides. Others

who are driving themselves and others can meet us at the Train Stop in Michigan City. The SSS Club and Program are covering the cost of the trip by train, lunch and activities for SSS students only. If you want to bring others, they must cover their own costs. **Call or email Pam Weir by July 13 to make a reservation at 269-927-8603 or: [weir@lakemichigancollege.edu](mailto:weir@lakemichigancollege.edu)**

## SSS CLUB

Interested? Contact **Donna Rummel** or **Sheran Wallis.**



## July 2009

### Dates to Remember

July 17	Progress Reports To Faculty
July 25	Year End Trip
July 27-30	Progress Report Meetings
July 31	Last Day to Withdraw

## JULY BIRTHDAYS

Angelica Barajas, Erik Boettcher, Jewel Braswell, Mary Burton, Lisa Coffel, Kristine Cunningham, Jessica Eastman, Marketta Ellis, Marthine Fleurinor, Cecilia Garrelts, Francisca Guest, Chelsie Haney, Craig Harper, Patrick Hill, Karissa Isom, Jamie Johnson, Sheilah Johnson, Stephanie Kappel, Lawrence Kimble, Elizabeth Kohltfarber, Rodney Lawson, Joann Lee, Casey McCalla, Turshanda Mosley, Olive Palmer, Terrell Reddic, Toshi Stokes, Ginger Smith, Jason Taylor and James Vinnedge.



## NEW STUDENTS

The following student(s) recently joined Student Support Services:

**Marcella Elston, Jeanie McKay, Kimberly Thompson, Yolande Watson, Petra Weber, and Margaret Wickham**

**WELCOME!**



## REGISTRATION

Classes are filling up for the Fall. **Don't wait!** Please contact **Jennifer Jerew**

for an appointment so she can update your Education Plan and complete your FAFSA for 2009-10 if you haven't submitted yet. **Fall classes begin on Tuesday, Sept. 8<sup>th</sup>.**

**Student Support Services**  
**Phone: 269-927-8603**  
**Toll Free: 1-800-252-1562, Ext. 8603**

**Sheran P. Wallis, Director**  
**Pam Weir, Office Coordinator**

**Jennifer Jerew**  
**Academic/Transfer Advisor**

**Penny Strang**  
**Math Educational Skills Specialist**

**Donna Rummel**  
**English Educ. Skills Specialist**

[www.lakemichigancollege.edu/ss/  
student\\_support](http://www.lakemichigancollege.edu/ss/student_support)